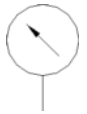
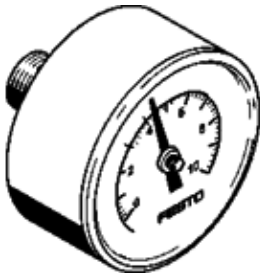


Pressure gauge MA-23-10-R1/8

Part number: 183897

FESTO

With display unit in bar and psi.



Data sheet

Feature	values
Indicating range [bar]	0 ... 10 bar
Conforms to standard	EN 837-1
Nominal size of pressure gauge	23
Design structure	Bourdon-tube pressure gauge
Mounting type	Line installation
Operating medium	Inert gases Neutral fluids
Working pressure	0 ... 10 bar
Alternating load factor	0.6
Measurement accuracy class	5
Protection class	IP44
Medium temperature	-20 ... 60 °C
Ambient temperature	-20 ... 60 °C
Materials note	Conforms to RoHS
Position of connection	Rear side central
Pneumatic connection	R1/8
Materials in contact with media	Brass
Materials information for screw-in stud	Brass
Materials information, housing	Brass
Materials info, viewing window	PC
Housing color	Black
Product weight	27 g
Note on operating and pilot medium	No acetylene No oxygen