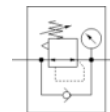
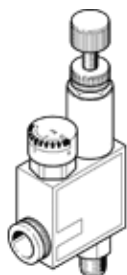


# Pressure regulator LRMA-M5-QS-6

Part number: 153490

**FESTO**

With pressure gauge.



## Data sheet

Feature	values
Controller function	Output pressure constant with secondary exhaust
Pneumatic connection, port 1	M5
Pneumatic connection, port 2	QS-6
Mounting type	with through hole
Standard nominal flow rate	42 l/min
Inlet pressure 1	0 ... 9 bar
Ambient temperature	0 ... 60 °C
Materials information, housing	PBT-reinforced
Operating medium	Compressed air in accordance with ISO8573-1:2010 [7:::]
Actuator lock	Knurled screw with lock nut
Assembly position	Any
Design structure	directly-controlled piston regulator with looped-through compressed air supply
Pressure gauge	with pressure gauge
Pressure regulation range	1 ... 8 bar
Product weight	27.5 g
Materials information for screw-in stud	Brass Nickel plated
Materials information for thread seal	PTFE