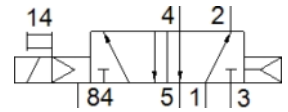
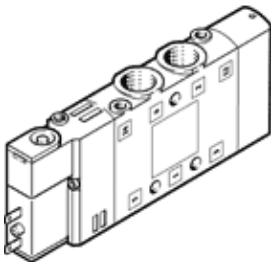


Solenoid valve CPE14-M1BH-5L-1/8

Part number: 196941

FESTO

High component density



Data sheet

| Feature | values |
|---|--|
| Valve function | 5/2 monostable |
| Type of actuation | electrical |
| Width | 14 mm |
| Standard nominal flow rate | 800 l/min |
| Working pressure | 3 ... 8 bar |
| Design structure | Piston slide |
| Type of reset | Air spring |
| Protection class | IP65 to IEC 60529 with plug socket |
| Authorization | Germanischer Lloyd c UL us - Recognized (OL) |
| Nominal size | 6 mm |
| Exhaust-air function | throttleable |
| Sealing principle | soft |
| Assembly position | Any |
| Manual override | with accessories, detenting Pushing |
| Type of piloting | Piloted |
| Pilot air supply | Internal |
| Flow direction | non reversible |
| Valve position identification | Label holder |
| Freedom from overlap | Yes |
| Note on forced dynamisation | Switching frequency at least once a week |
| Switching time off | 32 ms |
| Switching time on | 24 ms |
| Duty cycle | 100% with holding current reduction |
| Max. positive test pulse with logic 0 | 1,200 µs |
| Max. negative test pulse with logic 1 | 900 µs |
| Characteristic coil data | 24 V DC: 1.28 W |
| Permissible voltage fluctuation | -15 % / +10 % |
| Operating medium | Compressed air in accordance with ISO8573-1:2010 [7:4:4] |
| Note on operating and pilot medium | Lubricated operation possible (subsequently required for further operation) |
| Vibration resistance | Transport application test at severity level 2 in accordance with FN 942017-4 and EN 60068-2-6 |
| Shock resistance | Shock test with severity level 2 in accordance with FN 942017-5 and EN 60068-2-27 |
| Corrosion resistance classification CRC | 2 |
| Medium temperature | -5 ... 50 °C |
| Ambient temperature | -5 ... 50 °C |
| Product weight | 95 g |
| Electrical connection | 2-pin |
| Mounting type | with through hole |

| Feature | values |
|---------------------------------|-------------------|
| Pilot exhaust port 82 | M3 |
| Pilot exhaust port 84 | M3 |
| Pilot air port 12 | M3 |
| Pilot air port 14 | M3 |
| Pneumatic connection, port 1 | G1/8 |
| Pneumatic connection, port 2 | G1/8 |
| Pneumatic connection, port 3 | G1/8 |
| Pneumatic connection, port 4 | G1/8 |
| Pneumatic connection, port 5 | G1/8 |
| Materials note | Conforms to RoHS |
| Materials information for seals | NBR |
| Materials information, housing | Aluminum die cast |