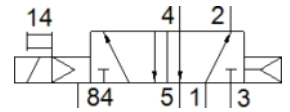
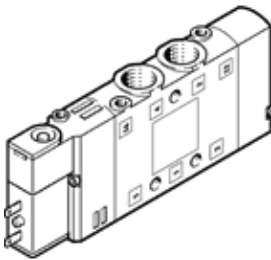


Solenoid valve CPE10-M1BH-5L-M7

Part number: 196927

FESTO

High component density



Data sheet

Feature	values
Valve function	5/2 monostable
Type of actuation	electrical
Width	10 mm
Standard nominal flow rate	350 l/min
Working pressure	3 ... 8 bar
Design structure	Piston slide
Type of reset	Air spring
Protection class	IP65 to IEC 60529 with plug socket
Authorization	Germanischer Lloyd c UL us - Recognized (OL)
Nominal size	4 mm
Exhaust-air function	throttleable
Sealing principle	soft
Assembly position	Any
Manual override	with accessories, detenting Pushing
Type of piloting	Piloted
Pilot air supply	Internal
Flow direction	non reversible
Valve position identification	Label holder
Freedom from overlap	Yes
Note on forced dynamisation	Switching frequency at least once a week
Switching time off	20 ms
Switching time on	16 ms
Duty cycle	100% with holding current reduction
Max. positive test pulse with logic 0	1,200 µs
Max. negative test pulse with logic 1	900 µs
Characteristic coil data	24 V DC: 1.28 W
Permissible voltage fluctuation	-15 % / +10 %
Operating medium	Compressed air in accordance with ISO8573-1:2010 [7:4:4]
Note on operating and pilot medium	Lubricated operation possible (subsequently required for further operation)
Vibration resistance	Transport application test at severity level 2 in accordance with FN 942017-4 and EN 60068-2-6
Shock resistance	Shock test with severity level 2 in accordance with FN 942017-5 and EN 60068-2-27
Corrosion resistance classification CRC	2
Medium temperature	-5 ... 50 °C
Ambient temperature	-5 ... 50 °C
Product weight	56 g
Electrical connection	2-pin
Mounting type	with through hole

Feature	values
Pilot exhaust port 82	M3
Pilot exhaust port 84	M3
Pilot air port 12	M3
Pilot air port 14	M3
Pneumatic connection, port 1	M7
Pneumatic connection, port 2	M7
Pneumatic connection, port 3	M7
Pneumatic connection, port 4	M7
Pneumatic connection, port 5	M7
Materials note	Conforms to RoHS
Materials information for seals	NBR
Materials information, housing	Aluminum die cast